



DEXTER A. HOLADAY II
Marine Surveyor

P.O. BOX 856
N. KINGSTOWN, RI 02852
(401) 474-3752

PHOTO REPORT

Name of Client: Mystic River Mudhead Sailing Association

Vessel: EDDIE MAXWELL 1988 28' Nauset Marine lobster style committee boat

Date of Inspection: 31 January 2024

Location of Inspection: Mystic Shipyard East in Mystic, CT





Starboard aft spray rail broken.



Transom corner damage.



Transom corner damage.



Port rubrail damaged and shifted.



Numerous gelcoat gouges on the topsides.



Yellow tape marking off area of gelcoat stress cracking the port amidships keel.



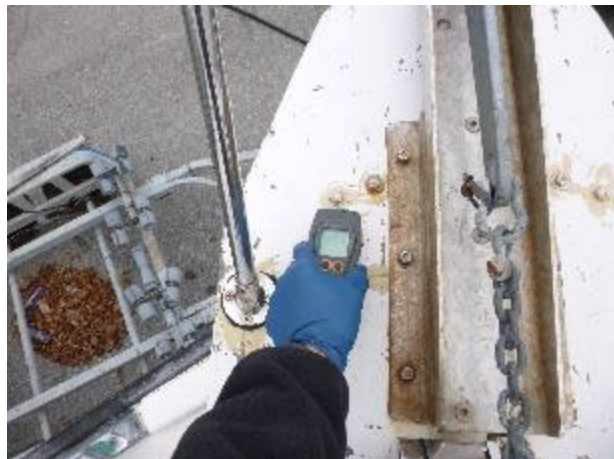
Yellow tape marking off area of gelcoat stress cracking the port amidships keel.



Yellow tape marking off areas of gelcoat stress cracking on the starboard keel.



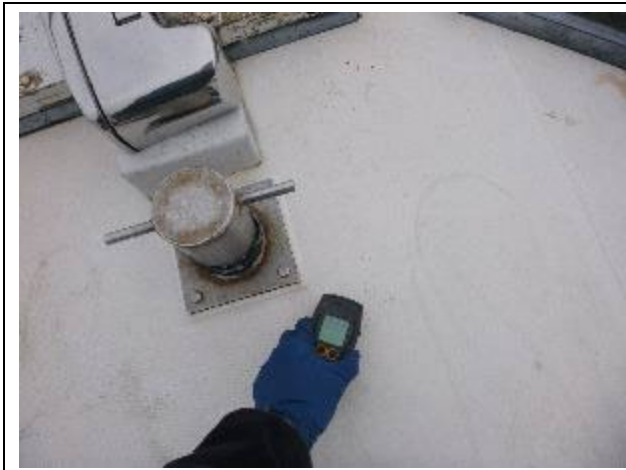
Maximum elevated moisture in the anchor pulpit. Meter reading 999.



Maximum elevated moisture in the anchor pulpit. Meter reading 999.



The anchor roller fasteners are not long enough to properly engage the nylon lock nuts.



Elevated moisture in the foredeck. Meter reading 207.



Elevated moisture in the foredeck. Meter reading 212.



Elevated moisture in the foredeck. Meter reading 239.



Elevated moisture in the foredeck. Meter reading 258.



Elevated moisture in the foredeck. Meter reading 207.



Elevated moisture in the foredeck. Meter reading 258.



Elevated moisture in the foredeck. Meter reading 239.



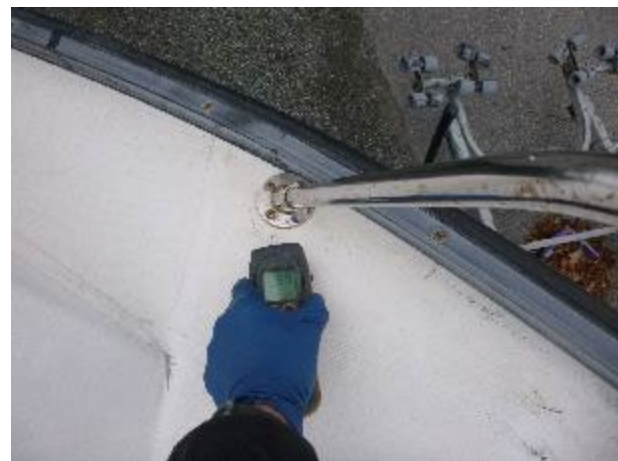
Elevated moisture in the foredeck. Meter reading 239.



Elevated moisture in the foredeck. Meter reading 220.



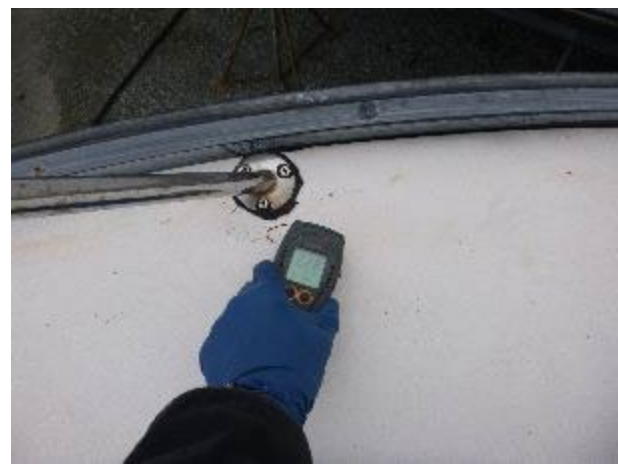
Elevated moisture in the foredeck. Meter reading 248.



Elevated moisture in the foredeck. Meter reading 239.



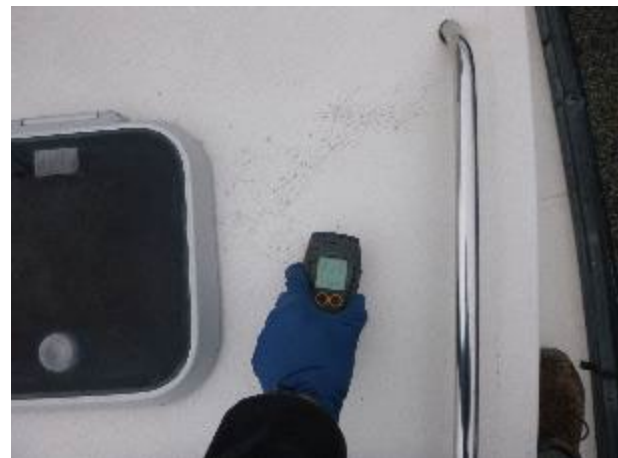
Elevated moisture in the foredeck. Meter reading 298.



Elevated moisture in the foredeck. Meter reading 228.



Elevated moisture in the port side top of the forward trunk cabin. Meter reading 220.



Elevated moisture in the port side top of the forward trunk cabin. Meter reading 215.



Elevated moisture in the port side top of the forward trunk cabin. Meter reading 229.



Elevated moisture in the port side top of the forward trunk cabin. Meter reading 215.



Elevated moisture in the port side top of the forward trunk cabin. Meter reading 212.



Elevated moisture in the forward trunk cabin deck. Meter reading 228.



Elevated moisture in the forward trunk cabin deck. Meter reading 212.



Elevated moisture in the starboard side of the forward trunk cabin. Meter reading 207.



Elevated moisture in the starboard side of the forward trunk cabin. Meter reading 212.



Elevated moisture in the starboard side of the forward trunk cabin. Meter reading 202.



Elevated moisture in the starboard side of the forward trunk cabin. Meter reading 210.



Elevated moisture in the starboard side of the forward trunk cabin. Meter reading 215.



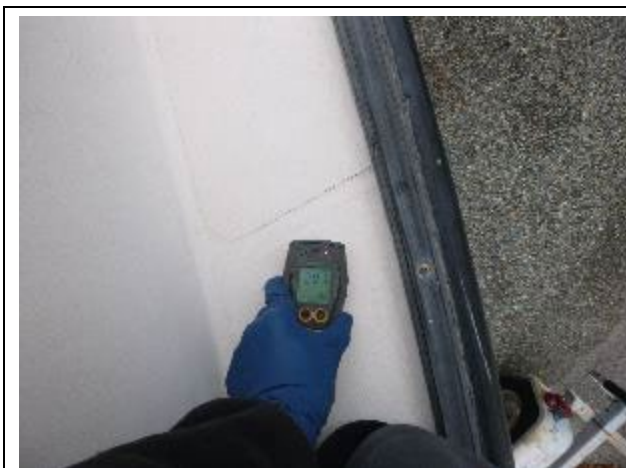
Elevated moisture in the starboard side of the forward trunk cabin. Meter reading 229.



Elevated moisture in the starboard side of the forward trunk cabin. Meter reading 207.



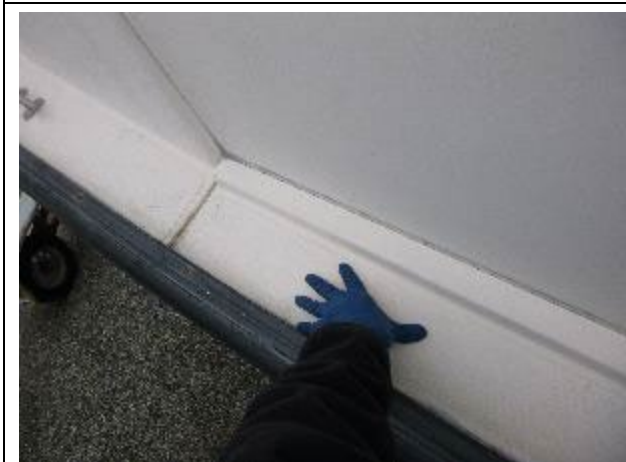
Elevated moisture in the port side deck. Meter reading 207.



**Elevated moisture in the port side deck.
Meter reading 207.**



**Elevated moisture in the port side deck.
Meter reading 212.**



Delamination noted in the port side deck.



**Elevated moisture in the port side deck.
Meter reading 207.**



**Elevated moisture in the port side deck.
Meter reading 207.**



**Elevated moisture in the port side deck.
Meter reading 207.**



**Elevated moisture in the port coaming top.
Meter reading 217.**



**Elevated moisture in the port coaming top.
Meter reading 217.**



**Elevated moisture in the port coaming top.
Meter reading 218.**



**Elevated moisture in the port coaming top.
Meter reading 220.**



**Elevated moisture in the port coaming top.
Meter reading 217.**



**Elevated moisture in the port coaming top.
Meter reading 200.**



Pulled through transom coaming fastener.



Elevated moisture in the aft end of the port coaming top. Meter reading 210.



Elevated moisture in the starboard side deck. Meter reading 212.



Elevated moisture in the starboard side deck. Meter reading 215.



**Elevated moisture in the starboard side deck.
Meter reading 207.**



**Elevated moisture in the starboard side deck.
Meter reading 217.**



**Delamination in the starboard cockpit
coaming top.**



**Elevated moisture in the starboard coaming
top. Meter reading 287.**



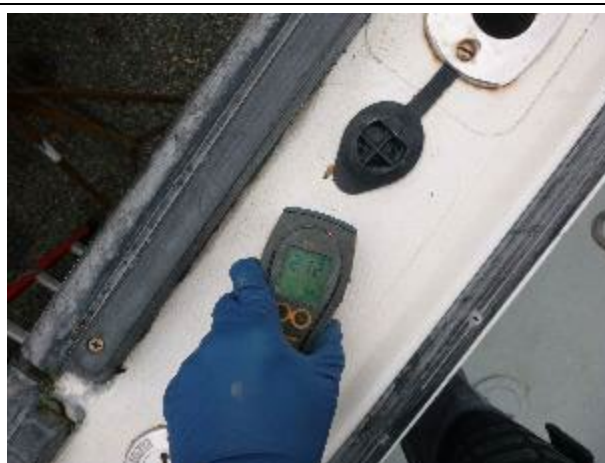
Elevated moisture in the starboard coaming top. Meter reading 215.



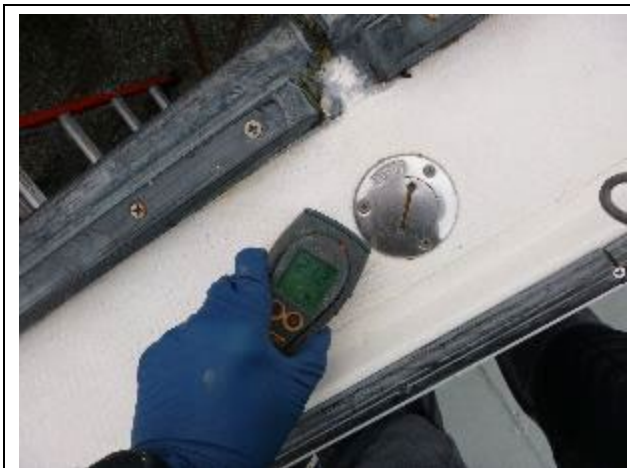
Elevated moisture in the starboard coaming top. Meter reading 220.



Elevated moisture in the starboard coaming top. Meter reading 210.



Elevated moisture in the starboard coaming top. Meter reading 212.



Elevated moisture in the starboard coaming top. Meter reading 212.



Elevated moisture in the starboard coaming top. Meter reading 220.



Elevated moisture in the starboard coaming top. Meter reading 210.



Elevated moisture in the starboard coaming top. Meter reading 212.



Elevated moisture in the starboard aft coaming top. Meter reading 229.



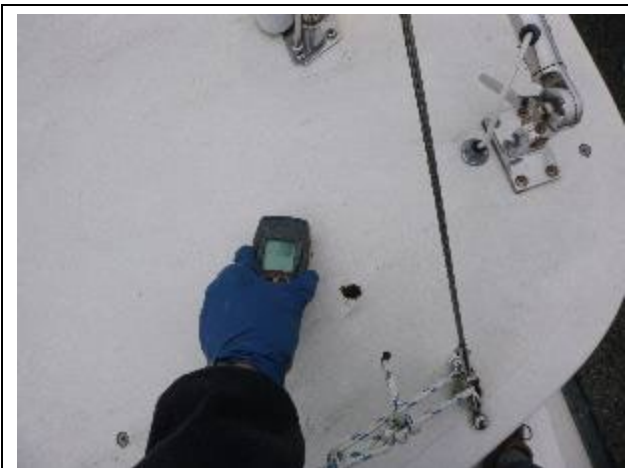
Elevated moisture in the starboard aft coaming top. Meter reading 207.



Elevated moisture in the starboard aft coaming top. Meter reading 202.



Moss filled old fastener hole on the hardtop.



Elevated moisture in the hardtop, starboard forward. Meter reading 220.



Elevated moisture in the hardtop, starboard forward. Meter reading 258.



Elevated moisture in the hardtop, starboard forward. Meter reading 207.



Elevated moisture in the middle of the hardtop. Meter reading 212.



Poorly filled old fastener holes in the hardtop below the course board structure.



Elevated moisture in the hardtop, aft. Meter reading 212.



Elevated moisture in the hardtop, aft. Meter reading 210.



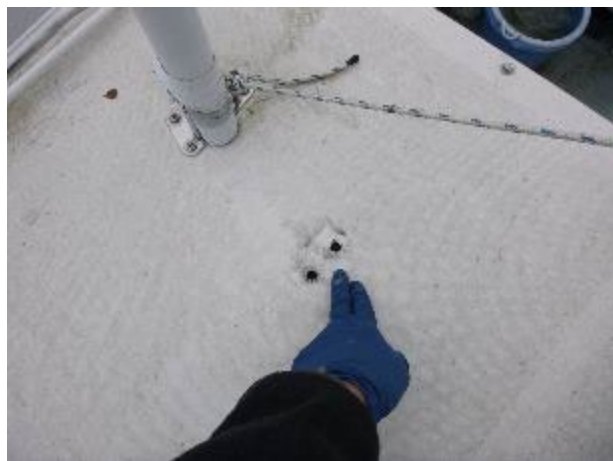
Elevated moisture in the hard top to port. Meter reading 202.



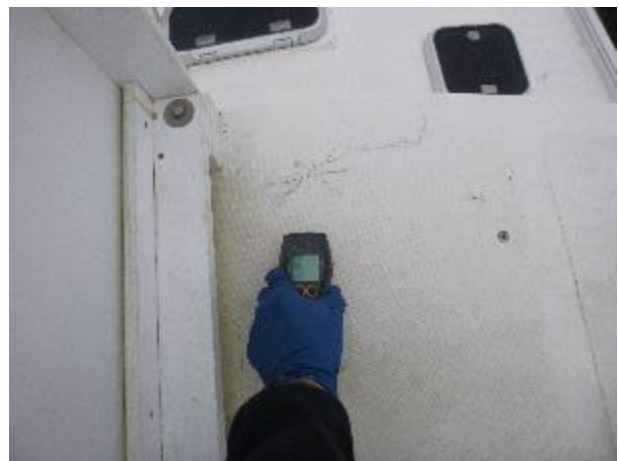
**Elevated moisture in the hardtop to port.
Meter reading 248.**



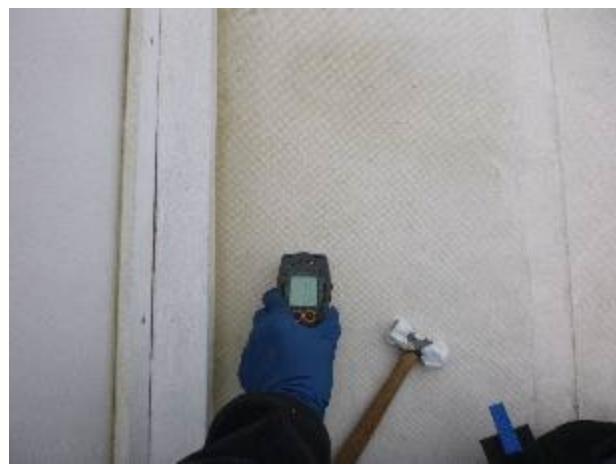
**Elevated moisture in the hardtop to port.
Meter reading 248.**



**Improperly filled fasteners holes on the
hardtop.**



**Elevated moisture in the hardtop middle.
Meter reading 210.**



**Elevated moisture in the hardtop middle.
Meter reading 215.**



**Elevated moisture in the hardtop. Meter
reading 207.**



**Elevated moisture in the hardtop. Meter
reading 207.**



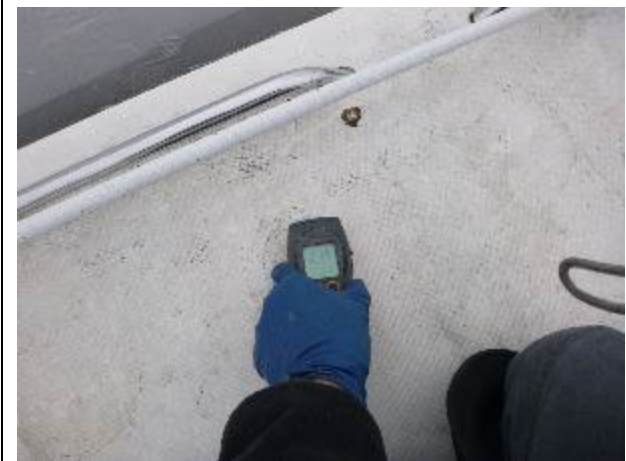
**Elevated moisture in the hardtop. Meter
reading 217.**



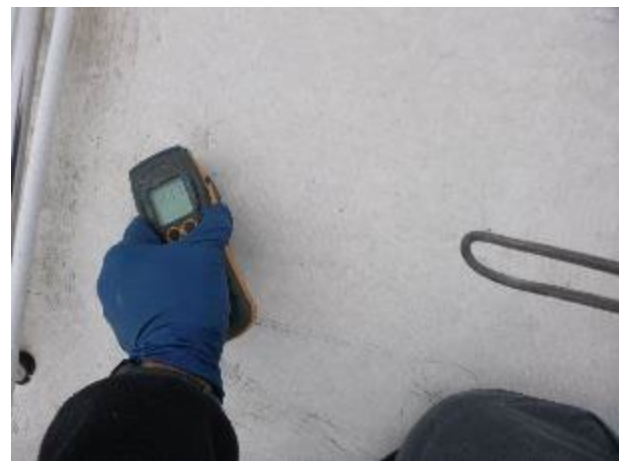
Elevated moisture in the hardtop to starboard. Meter reading 220.



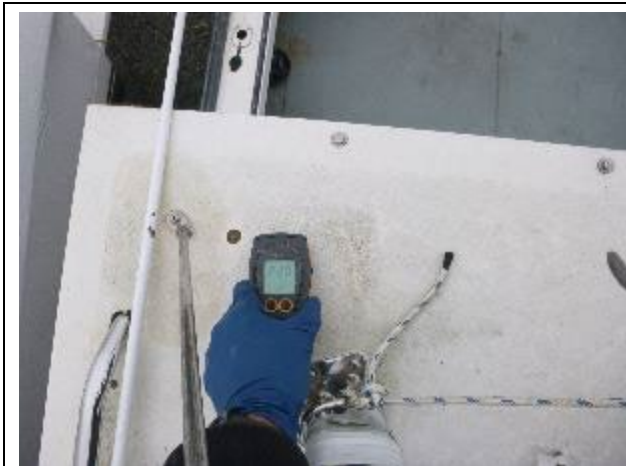
Elevated moisture in the hardtop to starboard. Meter reading 215.



Elevated moisture in the hardtop to starboard. Meter reading 215.



Elevated moisture in the hardtop to starboard. Meter reading 217.



Elevated moisture in the hardtop, starboard aft. Meter reading 220.



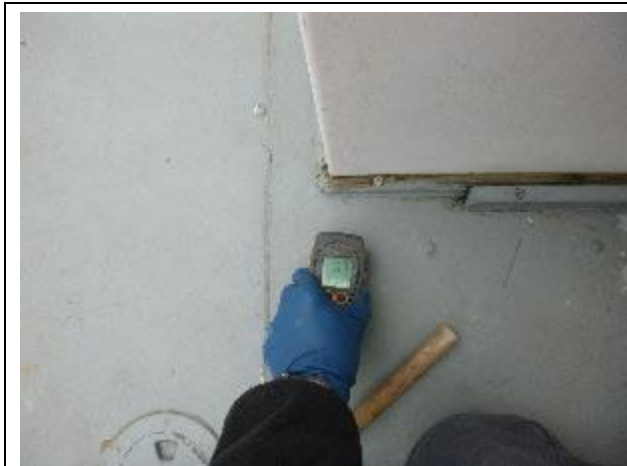
Elevated moisture in the main bulkhead below the helm to starboard. Meter reading 393.



Elevated moisture in the cabinsole, forward to starboard. Meter reading 217.



Elevated moisture in the cabinsole, forward to starboard. Meter reading 215.



Elevated moisture in the cockpit sole to starboard of the engine box. Meter reading 207.



Elevated moisture in the cockpit sole to starboard. Meter reading 200.



Elevated moisture in the cockpit sole to starboard. Meter reading 220.



Elevated moisture in the removable cockpit sole panel to starboard. Meter reading 210.



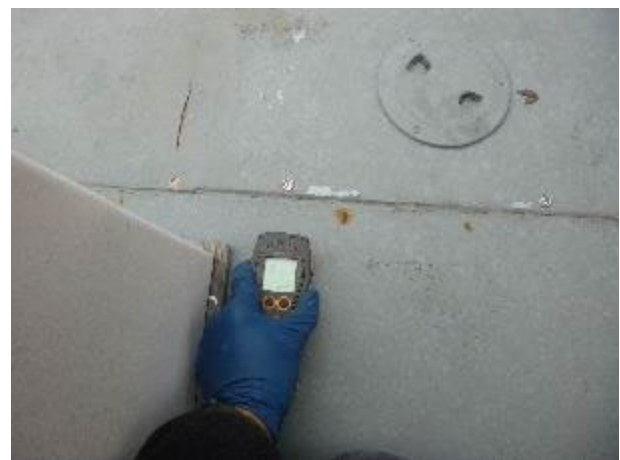
**Elevated moisture in the aft cockpit sole.
Meter reading 217.**



**Elevated moisture in the aft cockpit sole.
Meter reading 248.**



**Elevated moisture in the aft cockpit sole.
Meter reading 207.**



**Elevated moisture in the cockpit sole aft of
the engine box. Meter reading 211.**



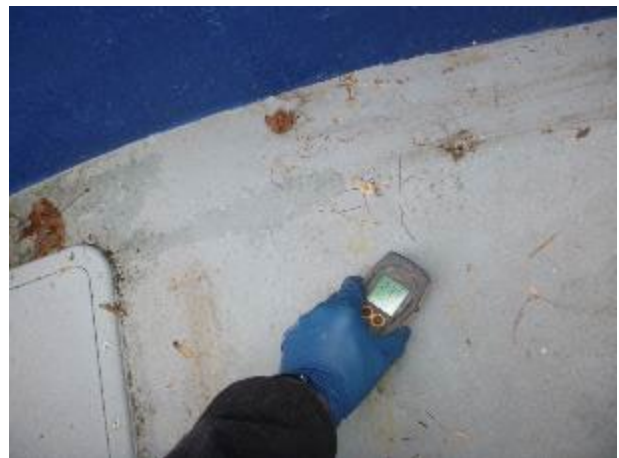
**Elevated moisture in the cockpit sole to port.
Meter reading 212.**



**Elevated moisture in the cockpit sole to port.
Meter reading 217.**



**Elevated moisture in the cockpit sole to port.
Meter reading 287.**



**Elevated moisture in the cockpit sole aft to
port. Meter reading 239.**



Elevated moisture in the cockpit sole aft to port. Meter reading 207.



The fuel fill hose is not double hose clamped and is also loose on the deck fill spud. The fuel vent fitting is loose in the hull.



The fuel fill hose is not double hose clamped at the tank connection.



The fuel fill hose for the removed port fuel tank is deteriorated.



The vent fitting for the removed port fuel tank is deteriorated.



The starboard VHF antenna wire is deteriorated.



Steering hose ends rust at the steering ram.



The lazaret hatch cover is missing its O-ring.



Cockpit sole plywood wet and starting to deteriorate aft.



Cockpit sole plywood and structure deteriorated and wet aft of the starboard fuel tank.



Cockpit sole plywood wet and starting to deteriorate aft.



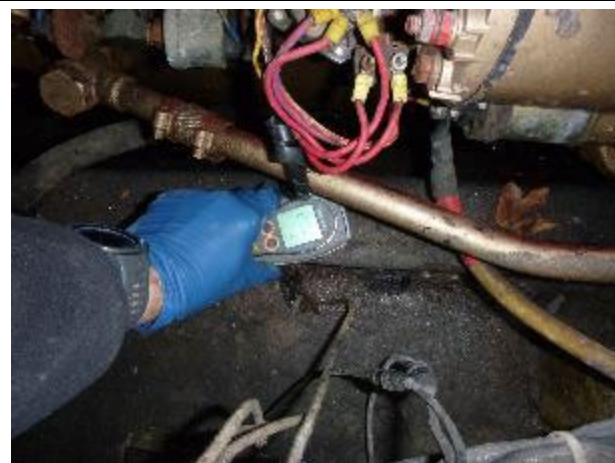
Engine as found



Engine ID tag



Transmission ID tag



**Elevated moisture in the port engine bed.
Meter reading 202.**



**Elevated moisture in the port engine bed.
Meter reading 354.**



Elevated moisture in the starboard engine bed. Meter reading 215.



Elevated moisture in the starboard engine bed. Meter reading 220.



The repaired stainless-steel exhaust mixing elbow leaks.



The exhaust hose is partially collapsed.



The engine starter positive cable connection needs a protective boot installed over it.



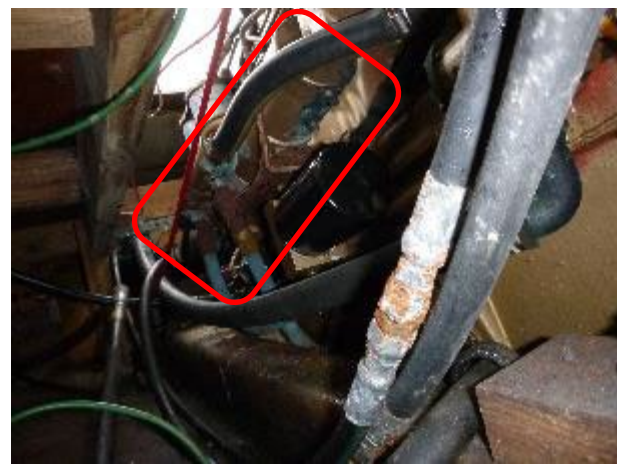
The port forward engine mount is deteriorated.



Signs of an oil leak near the forward crank shaft seal.



Corrosion and signs of antifreeze leaking to port of the circulating pump, below the alternator.



Rust and corrosion at the oil cooler to starboard.



Rust and corrosion at the oil cooler to starboard.



Rust and corrosion at the oil cooler to starboard.



Rust and corrosion at the oil cooler to starboard.



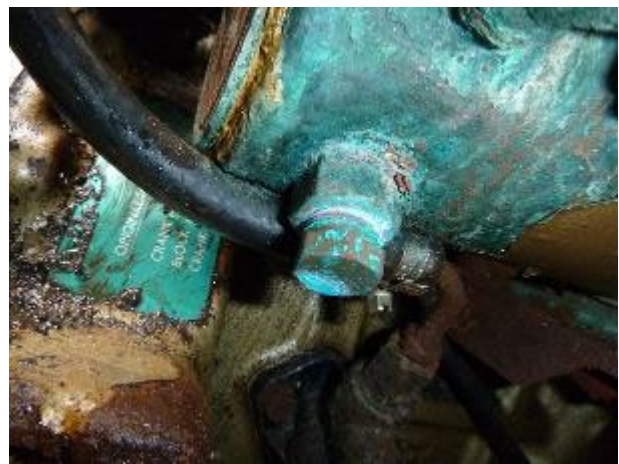
Rust and corrosion at the oil cooler to starboard.



Steering hose connections rusted to starboard of the engine.



Engine heat exchanger corrosion.



Engine heat exchanger corrosion.



Rusted fuel fitting.



Closeup of the previous photo.



Fuel and steering lines should be chafe protected on the starboard aft engine mount bracket.



Air intake screen rusted through.



Starboard aft engine mount deteriorated.



Antifreeze dripping of the port aft engine mount from a turbo leak.



Oil line connection rust on the side of the transmission.



Then engine raw water strainer is missing its lower strap.



The engine intake through hull valve should be serviced and the rusted hose clamps replaced.



The stuffing box hose clamps are rusted, and the water injection hose clamp is broken.



The positive wire for the fuel tank sender is not properly secured.



Abandoned ground wire in the port aft engine room bilge.



Standing water outboard of the port bilge stringer.



Standing water outboard of the starboard bilge stringer.



Rusted and corroded wiring terminal strip to adjacent to the horn compressor.



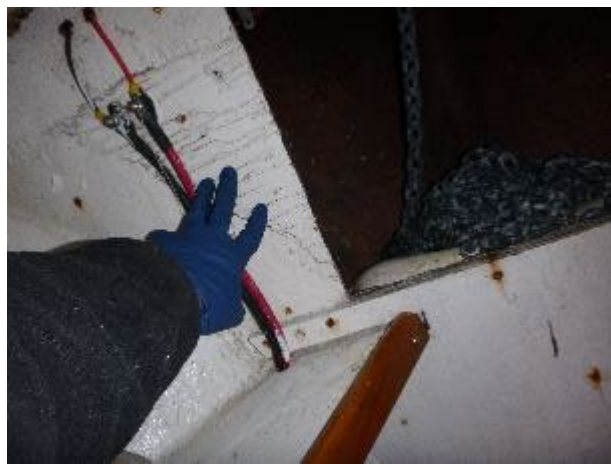
Standing water in several of the forward cabin stowages.



Deteriorated foredeck core at the anchor chain hawse pipe.



Wet vee berth plywood.



The anchor locker bulkhead is rotten.